



COOPERATIVE STRATEGIES

COMPLETE FINANCIAL & DEMOGRAPHIC PLANNING FOR EDUCATION

GRANVILLE EXEMPTED VILLAGE SCHOOLS
CAPACITY & DEMOGRAPHICS
AUGUST, 2022

A photograph of a classroom. A female teacher in a white shirt stands at the front near a chalkboard. Several students in the foreground have their hands raised. The scene is overlaid with a semi-transparent white box containing the text 'CAPACITY STUDY'.

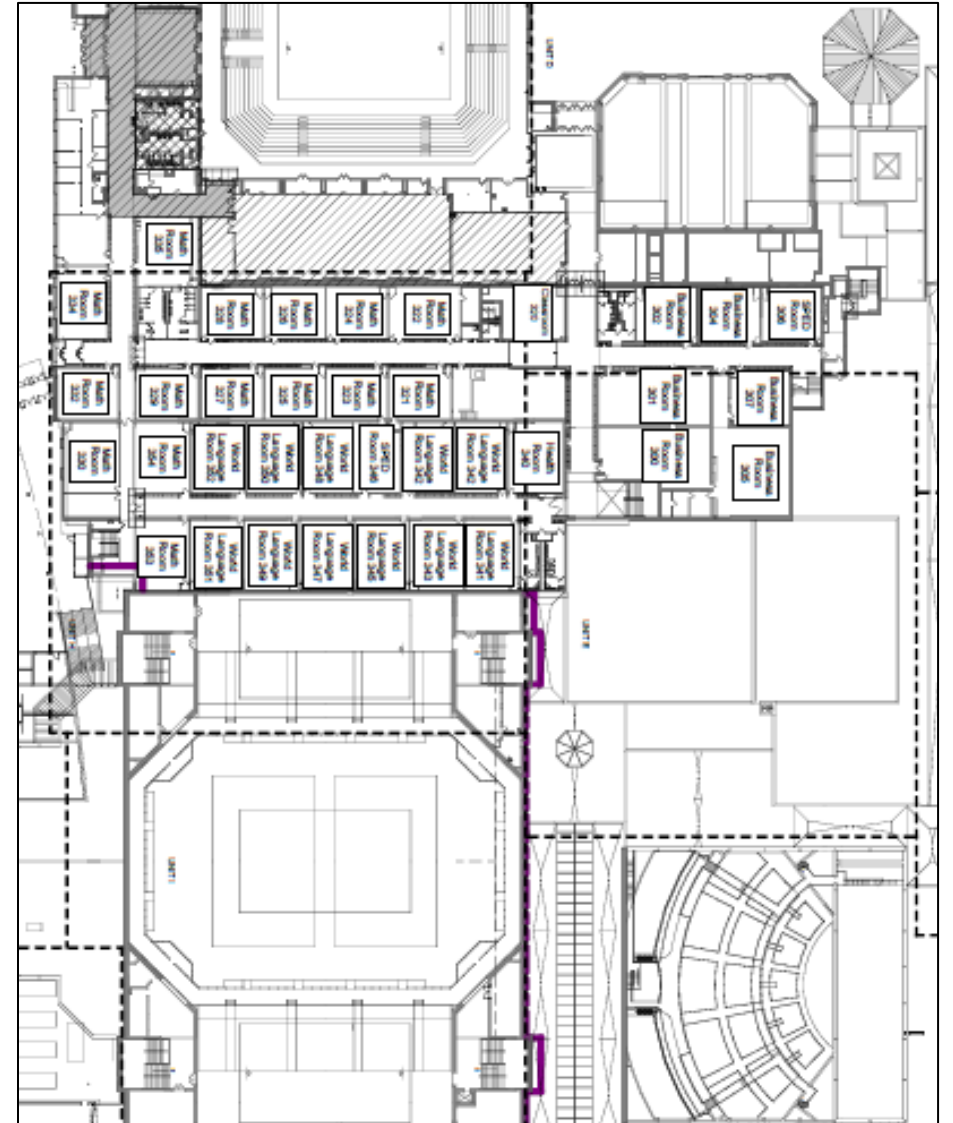
CAPACITY STUDY

► CAPACITY STUDY

INTRODUCTION

Process:

1. Collect floor plans and facility data from GEVSD
2. On-site assessments
3. Principal interviews
 1. Review building layout
 2. Confirm room uses
 3. Discuss special programming
 4. Other building considerations



► CAPACITY STUDY
INTRODUCTION

Total Building Classrooms = All designed classrooms

Standard Capacity Classrooms = Total Building Classrooms minus SPED Self-Contained, Specialty Spaces, and Other

SPED Self-Contained = Classrooms used for self-contained special education

Specialty Spaces = Designed classrooms used for art, music, and global language

Other = Designed classrooms used for resource, administrative, or other support spaces

Capacity = Number of Standard Capacity Classrooms multiplied by class size for each school; 10 students are added per SPED Self-Contained classroom;

Utilization = Enrollment divided by Capacity

► **CAPACITY STUDY**
CALCULATION

Elementary & Intermediate

Space	Class Size
K-3rd	22
4th-6th	25
Self-Contained Special Education	10

Standard Classrooms x Class Size
(double any ½ day KG space)



Special Education Classrooms x Class Size

Middle & High

Space	Class Size
7th - 12th	25
Self-Contained Special Education	10

Standard Classrooms x Class Size



Extra-Curricular Classrooms x Class Size



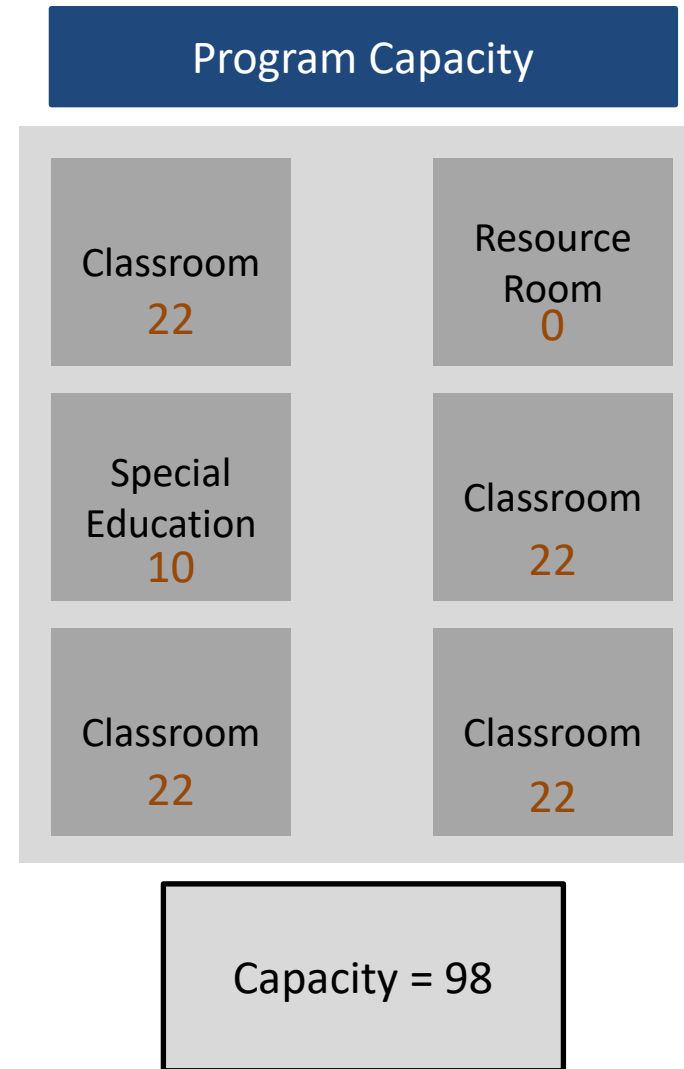
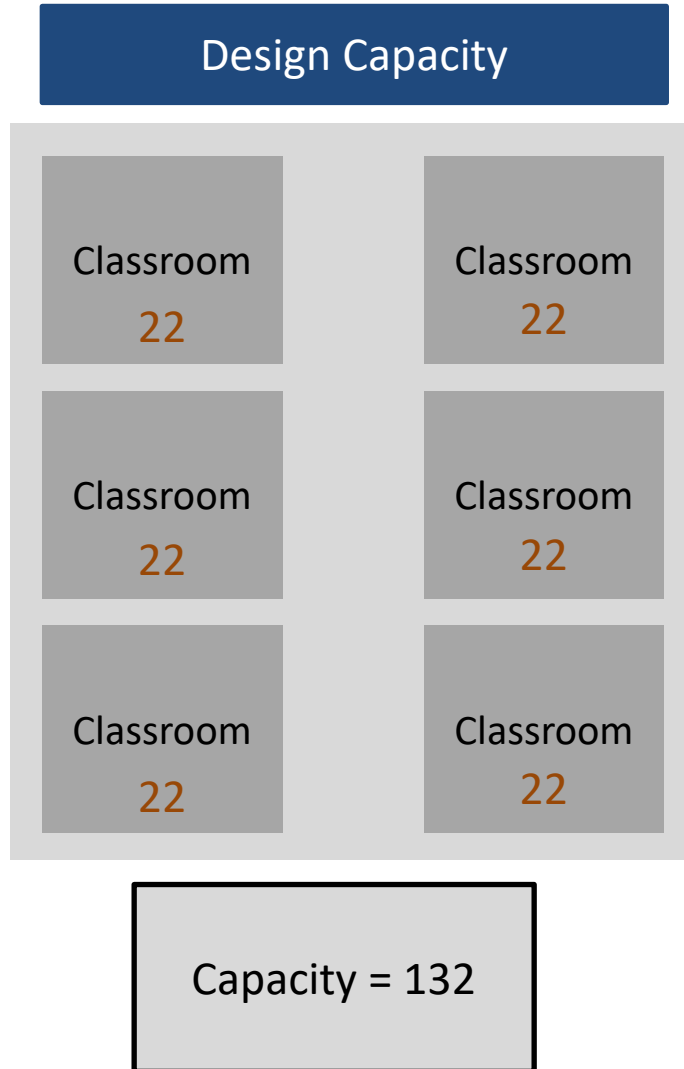
Special Education Classrooms x Class Size



Scheduling
Factor

7 periods in school day
1 teacher planning
Room in use 6/7 periods
= 86%

► CAPACITY STUDY
PROGRAM VS DESIGN CAPACITY



► CAPACITY STUDY

GRANVILLE ELEMENTARY GRANVILLE INTERMEDIATE

School	Total Building Classrooms	Program Capacity					2021-22 Enrollment	2021-22 Program Capacity Utilization
		Standard Capacity Classrooms	SPED Self-Contained	Specialty Spaces (Art / Music / Global)	Other	Capacity		
Granville ES*	39	35	1	3	0	802	714	89.0%
Granville IS	30	24	1	4	1	610	609	99.8%

*Capacity at GES includes 2 annex classrooms that will be used for KG in 2022-23. GES also uses one classroom for half day KG. This space has been given a capacity of 44 students, since it can be used for am and pm KG.

School	Total Building Classrooms	Design Capacity					2021-22 Enrollment	2021-22 Design Capacity Utilization
		Standard Capacity Classrooms	SPED Self-Contained	Specialty Spaces (Art / Music / Global)	Other	Capacity		
Granville ES*	39	35	1	3	0	802	714	89.0%
Granville IS	30	25	1	4	0	635	609	95.9%

*Capacity at GES includes 2 annex classrooms that will be used for KG in 2022-23. GES also uses one classroom for half day KG. This space has been given a capacity of 44 students, since it can be used for am and pm KG.

► CAPACITY STUDY

GRANVILLE MIDDLE
GRANVILLE HIGH

School	Total Building Classrooms	Program Capacity				2021-22 Enrollment	2021-22 Program Capacity Utilization
		Standard Capacity Classrooms	SPED Self-Contained	Other	Program Capacity w/ 86% Scheduling Factor		
Granville MS	26	25	1	0	544	428	78.7%
Granville HS	46	45	1	0	972	786	80.9%

School	Total Building Classrooms	Design Capacity				2021-22 Enrollment	2021-22 Design Capacity Utilization
		Standard Capacity Classrooms	SPED Self-Contained	Other	Design Capacity w/ 86% Scheduling Factor		
Granville MS	26	25	1	0	544	428	78.7%
Granville HS	46	45	1	0	972	786	80.9%

A photograph of a classroom. A female teacher in a white shirt stands at the front near a chalkboard. Several students in the foreground have their hands raised. The text 'ENROLLMENT PROJECTIONS' is overlaid in the center.

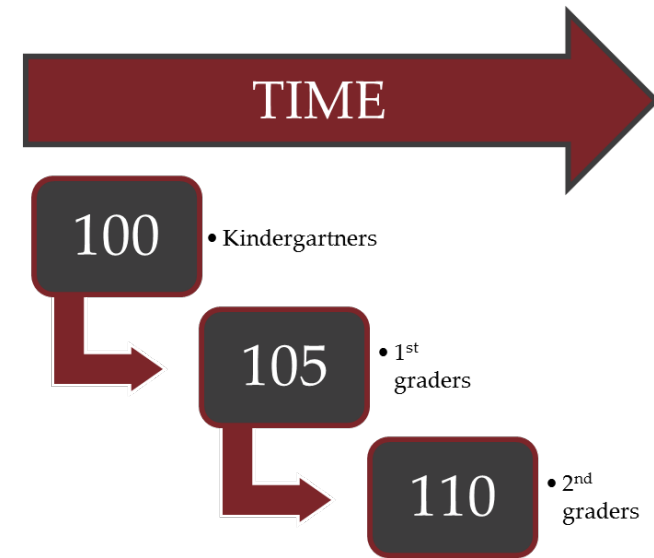
ENROLLMENT PROJECTIONS

► ENROLLMENT PROJECTIONS

INTRODUCTION

10-year enrollment projections by grade, district-wide

- Developed using the cohort survival method
 - 10 years of historical enrollment by grade, by year
 - Historical resident live birth counts
- Housing
 - Building permits & housing development information
- Census datasets

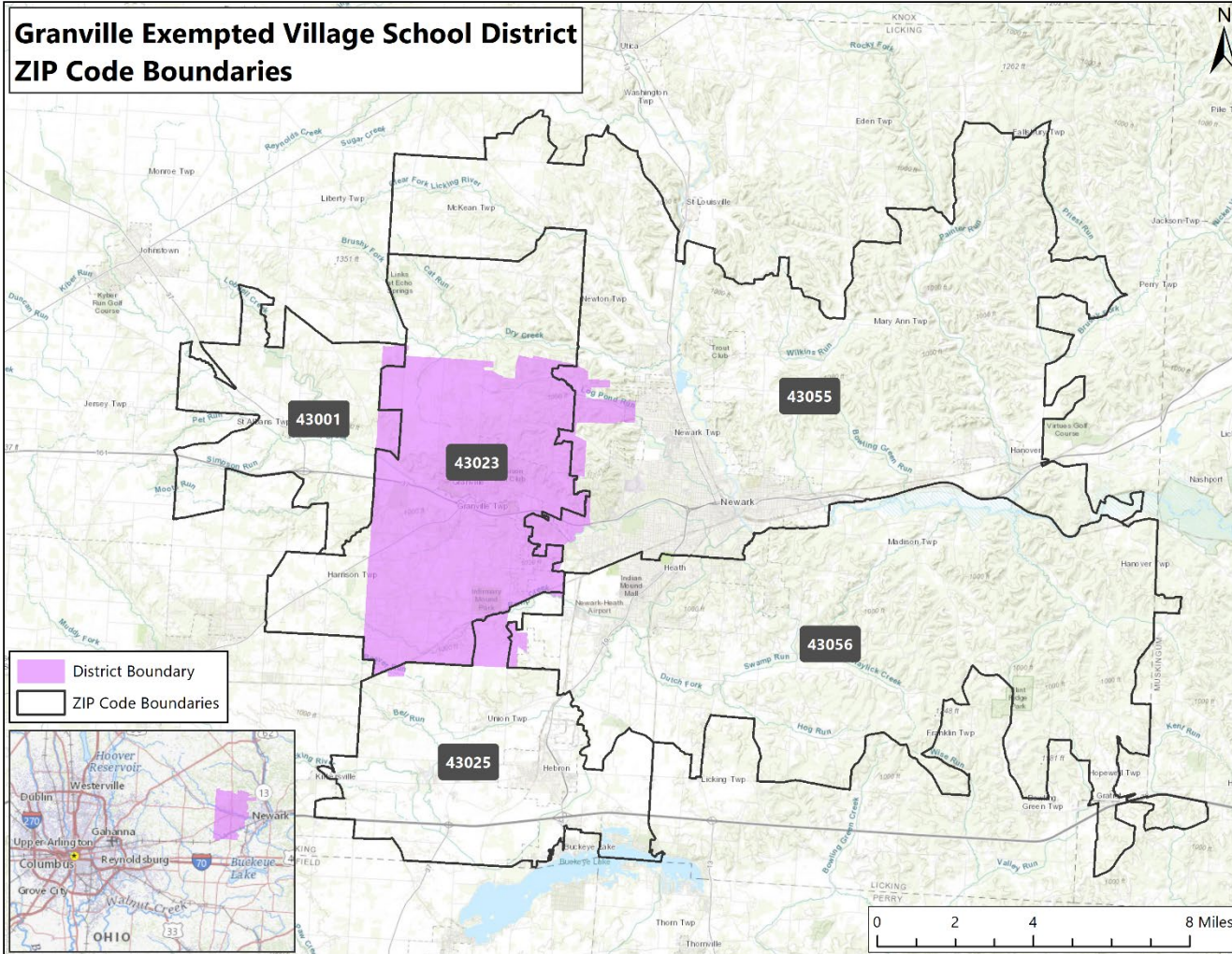


Cohort Survival Method

- Uses **historical** live birth data and **historical** student enrollment to “age” (or progress) a known population (cohort) throughout the school grades
- Survival ratios analyzed
- Projection ratios developed

► ENROLLMENT PROJECTIONS

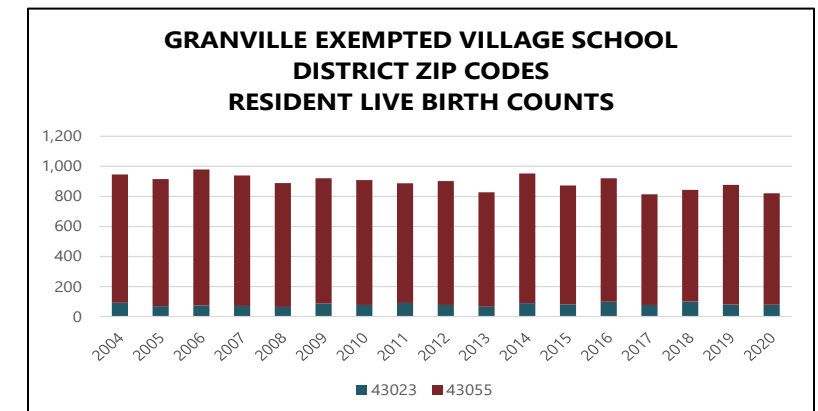
BIRTH DATA



**GRANVILLE EXEMPTED VILLAGE SCHOOL DISTRICT ZIP CODES
RESIDENT LIVE BIRTH COUNTS**

Year	43001	43023	43025	43055	43056
2004	33	92	50	854	174
2005	20	70	51	845	170
2006	23	75	53	904	201
2007	24	71	54	868	168
2008	23	64	57	825	184
2009	20	87	49	833	181
2010	23	78	56	831	175
2011	16	91	53	796	171
2012	20	77	57	825	166
2013	24	65	61	762	176
2014	24	89	46	864	192
2015	22	81	56	792	166
2016	28	99	52	821	175
2017	25	78	49	736	156
2018	23	100	50	743	212
2019	26	80	59	797	176
2020	15	79	32	742	158

Source: Ohio Department of Health



► ENROLLMENT PROJECTIONS

SURVIVAL RATIOS

Survival Ratios - District-wide

from	to	Birth to K	K to 1	Birth to 1	1 to 2	2 to 3	3 to 4	4 to 5	5 to 6	6 to 7	7 to 8	8 to 9	9 to 10	10 to 11	11 to 12
2012-13	2013-14	13.95%	112.31%	15.55%	112.21%	103.05%	99.46%	102.11%	102.36%	103.61%	102.18%	100.47%	98.60%	97.98%	101.83%
2013-14	2014-15	14.24%	126.61%	17.66%	102.05%	100.00%	107.10%	100.00%	100.00%	100.46%	98.51%	96.58%	95.81%	93.40%	100.52%
2014-15	2015-16	16.28%	123.66%	17.61%	109.55%	106.04%	110.88%	105.52%	103.28%	99.48%	100.92%	100.51%	97.35%	99.03%	99.49%
2015-16	2016-17	15.56%	118.24%	19.25%	103.70%	103.49%	106.96%	105.52%	100.52%	105.29%	103.63%	104.55%	101.51%	92.73%	100.00%
2016-17	2017-18	17.41%	121.01%	18.83%	109.14%	104.17%	106.74%	105.33%	106.98%	103.13%	95.98%	100.50%	99.13%	93.56%	103.92%
2017-18	2018-19	17.90%	115.92%	20.18%	100.60%	102.62%	105.71%	107.37%	105.06%	101.63%	100.00%	104.19%	102.49%	90.79%	103.17%
2018-19	2019-20	17.63%	110.81%	19.83%	104.95%	107.74%	106.12%	107.03%	106.86%	102.67%	105.35%	105.05%	100.50%	95.15%	102.42%
2019-20	2020-21	17.41%	102.38%	18.05%	103.05%	101.57%	102.21%	100.96%	101.01%	99.54%	98.44%	100.00%	100.00%	98.50%	101.02%
2020-21	2021-22	19.57%	107.89%	18.79%	111.63%	105.33%	100.52%	102.16%	107.14%	102.50%	102.76%	103.70%	98.98%	96.15%	97.97%
mean simple all years		16.66%	115.43%	18.42%	106.32%	103.78%	105.08%	104.00%	103.69%	102.04%	100.86%	101.73%	99.38%	95.25%	101.15%
std. dev. simple all years		1.82%	7.83%	1.40%	4.35%	2.36%	3.64%	2.72%	2.90%	1.94%	2.94%	2.81%	2.05%	2.86%	1.89%
mean simple 5 years		17.98%	111.60%	19.13%	105.87%	104.28%	104.26%	104.57%	105.41%	101.89%	100.51%	102.69%	100.22%	94.83%	101.70%
std. dev. simple 5 years		0.91%	7.19%	0.86%	4.49%	2.41%	2.74%	2.88%	2.60%	1.42%	3.66%	2.28%	1.41%	2.88%	2.35%
mean simple 3 years		18.20%	107.03%	18.89%	106.54%	104.88%	102.95%	103.38%	105.01%	101.57%	102.18%	102.92%	99.83%	96.60%	100.47%
std. dev. simple 3 years		1.19%	4.28%	0.90%	4.51%	3.11%	2.88%	3.21%	3.46%	1.76%	3.49%	2.62%	0.77%	1.72%	2.27%
mean simple 2 years		18.49%	105.14%	18.42%	107.34%	103.45%	101.36%	101.56%	104.08%	101.02%	100.60%	101.85%	99.49%	97.33%	99.49%
std. dev. simple 2 years		1.52%	3.90%	0.52%	6.07%	2.66%	1.20%	0.85%	4.34%	2.09%	3.06%	2.62%	0.72%	1.66%	2.16%
mean weighted all years		17.93%	110.47%	18.84%	106.68%	104.26%	103.56%	103.65%	104.80%	101.83%	101.29%	102.62%	99.81%	95.66%	100.58%
std. dev. weighted all years		1.47%	6.96%	0.92%	4.42%	2.30%	3.11%	2.68%	2.92%	1.65%	2.95%	2.29%	1.44%	2.54%	2.21%
mean weighted 5 years		18.63%	107.65%	18.80%	107.93%	104.47%	102.09%	102.83%	105.42%	101.73%	101.63%	102.86%	99.63%	96.25%	99.74%
std. dev. weighted 5 years		1.14%	4.62%	0.69%	4.70%	2.24%	2.41%	2.40%	2.94%	1.46%	2.73%	2.03%	1.02%	2.04%	2.27%
mean weighted 3 years		19.11%	107.04%	18.70%	109.86%	104.76%	101.03%	102.14%	106.06%	101.99%	102.11%	103.11%	99.22%	96.53%	98.68%
std. dev. weighted 3 years		1.06%	2.72%	0.44%	4.16%	1.89%	1.49%	1.33%	2.85%	1.38%	2.16%	1.78%	0.57%	1.14%	1.69%
mean weighted 2 years		19.46%	107.63%	18.75%	111.22%	105.15%	100.60%	102.10%	106.85%	102.36%	102.56%	103.53%	99.03%	96.27%	98.11%
std. dev. weighted 2 years		0.65%	1.66%	0.22%	2.58%	1.13%	0.51%	0.36%	1.85%	0.89%	1.30%	1.12%	0.31%	0.71%	0.92%

▶ HISTORICAL ENROLLMENT

Historical Enrollment - District-wide

Grade	2012-13	2013-14	2014-15	2015-16	2016-17	2017-18	2018-19	2019-20	2020-21	2021-22
K	130	124	131	148	138	157	148	168	152	180
1	131	146	157	162	175	167	182	164	172	164
2	164	147	149	172	168	191	168	191	169	192
3	184	169	147	158	178	175	196	181	194	178
4	190	183	181	163	169	190	185	208	185	195
5	212	194	183	191	172	178	204	198	210	189
6	194	217	194	189	192	184	187	218	200	225
7	229	201	218	193	199	198	187	192	217	205
8	214	234	198	220	200	191	198	197	189	223
9	215	215	226	199	230	201	199	208	197	196
10	198	212	206	220	202	228	206	200	208	195
11	219	194	198	204	204	189	207	196	197	200
12	197	223	195	197	204	212	195	212	198	193
23	0	0	0	0	4	0	2	2	0	2
K - 12 Total	2,477	2,459	2,383	2,416	2,431	2,461	2,462	2,533	2,488	2,535
Grand Total	2,477	2,459	2,383	2,416	2,435	2,461	2,464	2,535	2,488	2,537

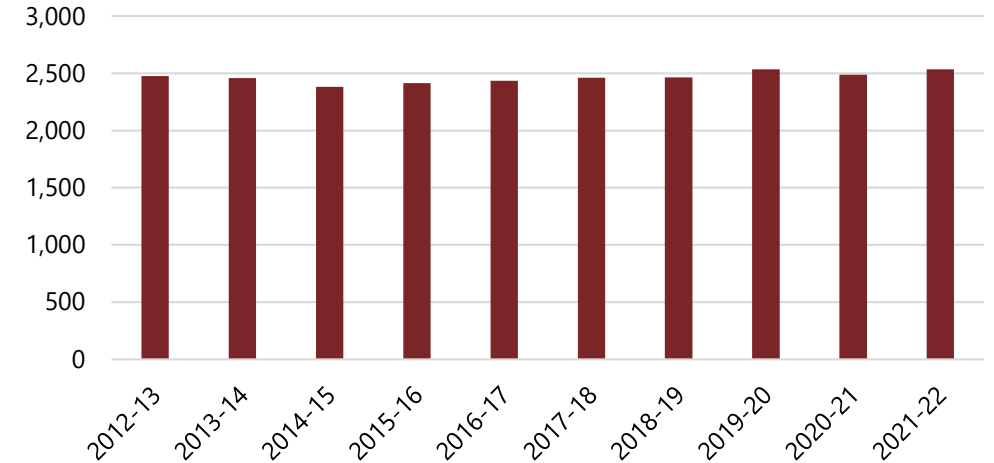
Source: Granville Exempted Village School District

Historical Enrollment - District-wide

Grade	2012-13	2013-14	2014-15	2015-16	2016-17	2017-18	2018-19	2019-20	2020-21	2021-22
K - 3	609	586	584	640	659	690	694	704	687	714
4 - 6	596	594	558	543	533	552	576	624	595	609
7 - 8	443	435	416	413	399	389	385	389	406	428
9 - 12	829	844	825	820	840	830	807	816	800	784
Other	0	0	0	0	4	0	2	2	0	2
K - 12 Total	2,477	2,459	2,383	2,416	2,431	2,461	2,462	2,533	2,488	2,535
Grand Total	2,477	2,459	2,383	2,416	2,435	2,461	2,464	2,535	2,488	2,537

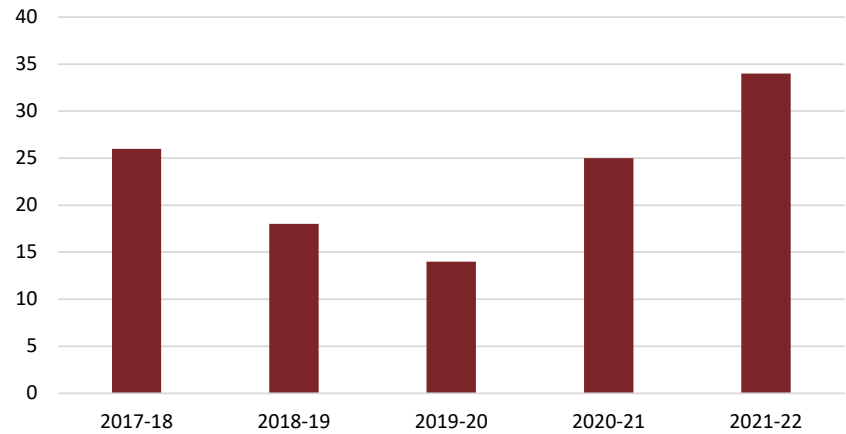
Source: Granville Exempted Village School District

HISTORICAL ENROLLMENT - DISTRICT-WIDE



▶ OTHER ENROLLMENT

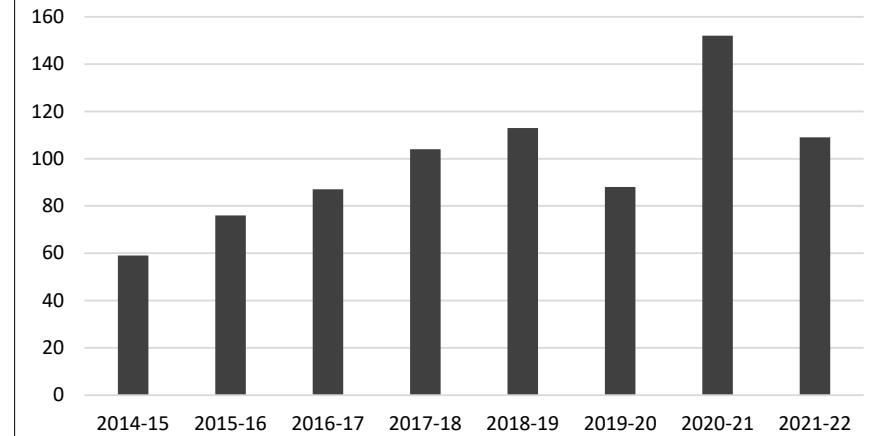
STUDENTS ATTENDING COMMUNITY SCHOOLS



21-22 Open Enrollment Out

33

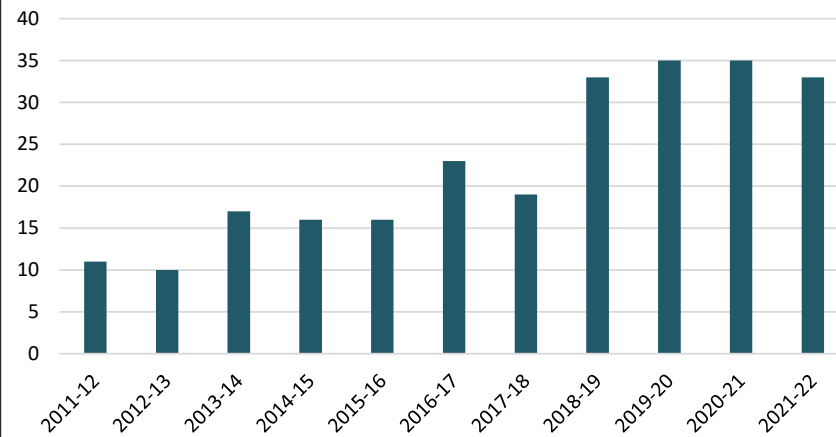
HOME-SCHOOLED STUDENTS



21-22 Community Schools

34

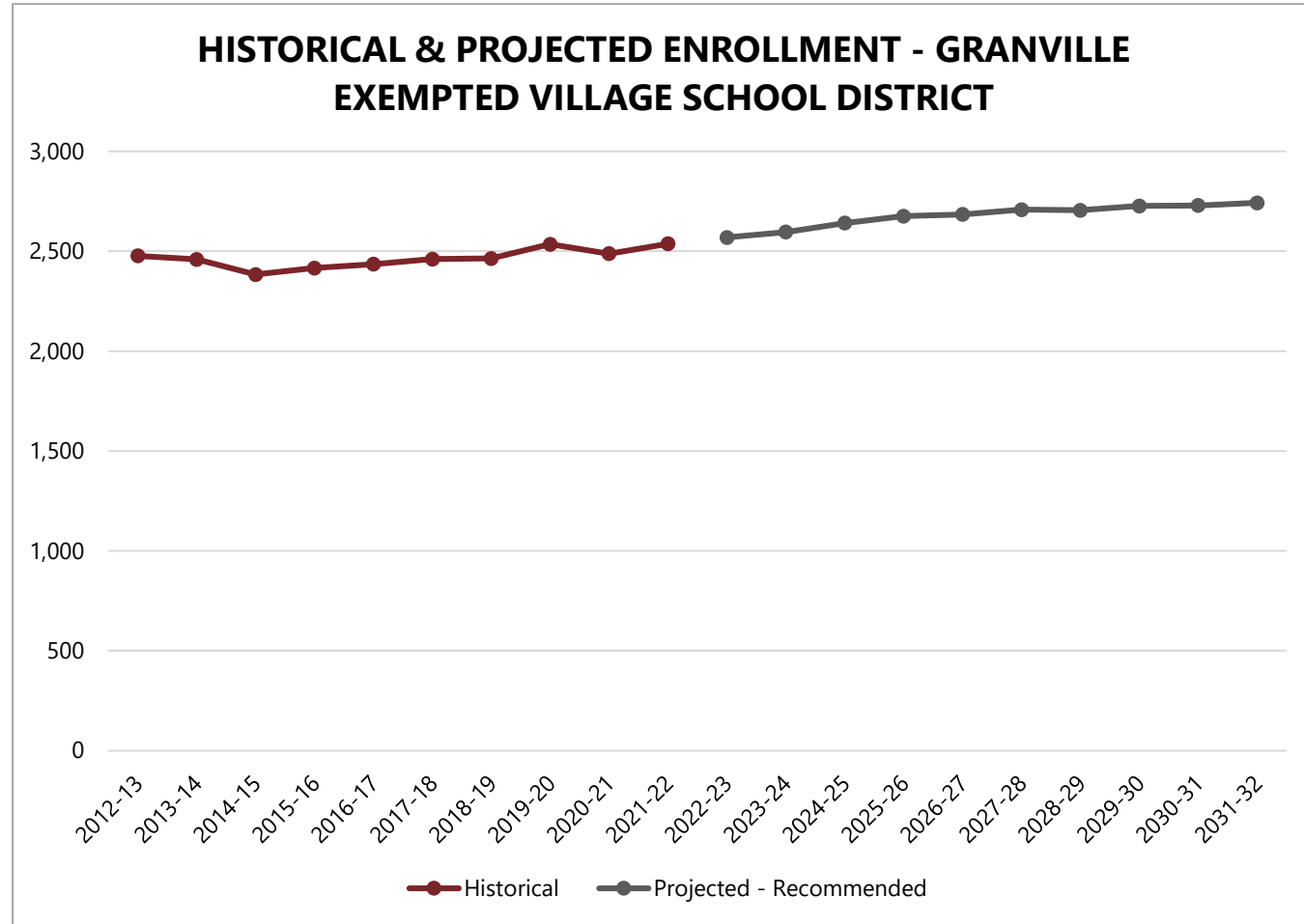
OPEN ENROLLMENT OUT



21-22 Home School

109

▶ HISTORICAL AND PROJECTED



► ENROLLMENT PROJECTIONS

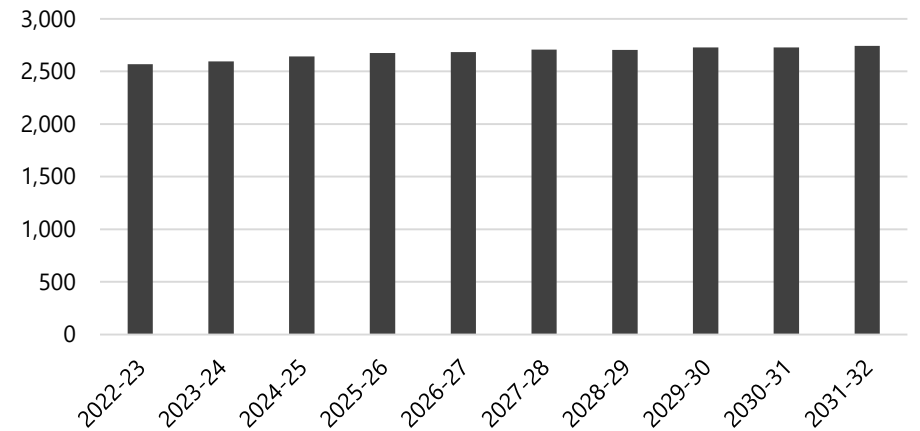
PROJECTED ENROLLMENT

Projected Enrollment - Recommended - District-wide

Grade	2022-23	2023-24	2024-25	2025-26	2026-27	2027-28	2028-29	2029-30	2030-31	2031-32
K	146	152	158	148	152	152	152	152	152	152
1	201	163	169	176	165	170	170	170	170	170
2	174	213	173	179	186	174	180	180	180	180
3	200	181	222	180	187	194	182	188	188	188
4	187	210	190	233	189	196	204	191	197	197
5	206	198	223	201	247	201	208	216	202	209
6	200	219	210	236	214	262	213	220	229	215
7	230	205	223	214	241	218	267	217	225	234
8	208	233	207	226	217	244	221	270	220	228
9	230	214	240	214	233	224	252	228	279	227
10	196	230	215	240	214	234	224	252	228	279
11	186	187	219	204	229	204	223	214	240	217
12	203	189	190	223	208	233	207	227	217	244
23	2	2	2	2	2	2	2	2	2	2
K - 12 Total	2,567	2,594	2,639	2,674	2,682	2,706	2,703	2,725	2,727	2,740
Grand Total	2,569	2,596	2,641	2,676	2,684	2,708	2,705	2,727	2,729	2,742

Source: Cooperative Strategies

PROJECTED ENROLLMENT - RECOMMENDED - DISTRICT-WIDE



Projected Enrollment - Recommended - District-wide

Grade	2022-23	2023-24	2024-25	2025-26	2026-27	2027-28	2028-29	2029-30	2030-31	2031-32
K - 3	721	709	722	683	690	690	684	690	690	690
4 - 6	593	627	623	670	650	659	625	627	628	621
7 - 8	438	438	430	440	458	462	488	487	445	462
9 - 12	815	820	864	881	884	895	906	921	964	967
Other	2	2	2	2	2	2	2	2	2	2
K - 12 Total	2,567	2,594	2,639	2,674	2,682	2,706	2,703	2,725	2,727	2,740
Grand Total	2,569	2,596	2,641	2,676	2,684	2,708	2,705	2,727	2,729	2,742

Source: Cooperative Strategies

► ENROLLMENT PROJECTIONS

FACTORS TO CONSIDER

- It is important to continue to monitor enrollment trends and live birth trends as these factors impact future enrollment
- The following factors can also cause significant change in projected student enrollment
 - Boundary adjustments
 - New school openings
 - School closures
 - Changes / additions in program offerings
 - Preschool programs
 - Change in grade configuration
 - Interest rates / unemployment shifts
 - Intra- and inter-District transfer
 - Magnet / charter / private school opening or closure
 - Zoning changes
 - Annexations
 - Unplanned new housing activity
 - Planned, but not built, housing
 - School voucher programs
 - Pandemics

A photograph of a classroom. A female teacher in a white shirt stands at the front near a chalkboard. Several students in the foreground have their hands raised. The scene is overlaid with a semi-transparent white box containing the text 'STUDENT POTENTIAL ANALYSIS'.

STUDENT POTENTIAL ANALYSIS

▶ STUDENT POTENTIAL ANALYSIS

INTRODUCTION

Measures the impact that housing has on student enrollment

- Different methodology from enrollment projections



Study is based on student yields

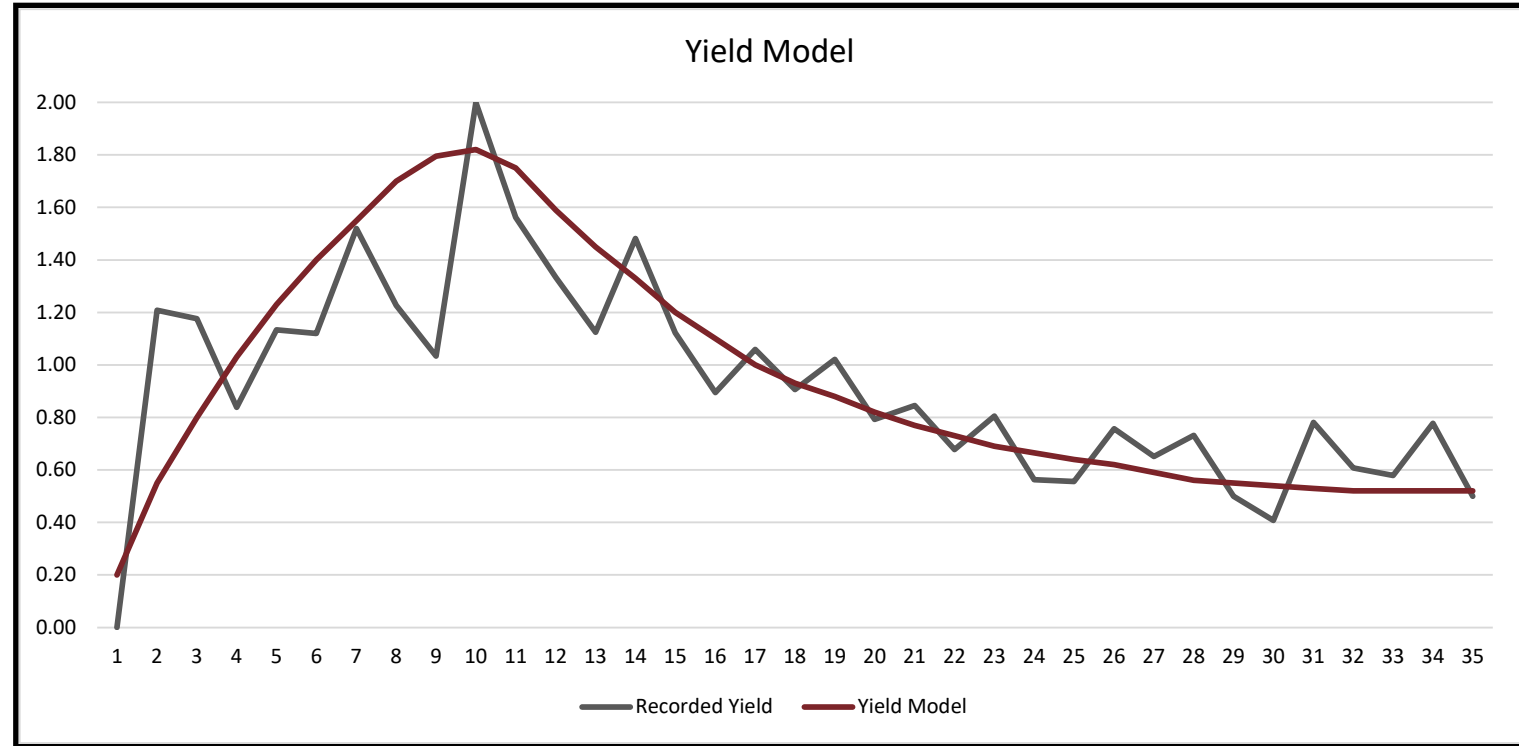
- Ratio of students divided by housing units
- 5 students / 10 homes = 0.5 students/unit

STUDENT POTENTIAL ANALYSIS

YIELD MODEL

K-12 Student Yields	Assessed Value of Home																	TOTAL
	No Data	<50K	50K - 100K	100K - 150K	150K - 200K	200K - 250K	250K - 300K	300K - 350K	350K - 400K	400K - 450K	450K - 500K	500K - 550K	550K - 600K	600K - 650K	> 600K			
>35	0.83	1.14	0.34	0.16	0.45	0.41	0.56	0.57	0.58	0.67	0.51	0.50	0.00	0.50	0.16	0.49		
35	-	-	-	-	-	1.00	1.33	0.00	1.00	0.00	0.00	0.00	-	0.50	0.00	0.38		
34	-	-	-	-	-	1.00	-	1.00	1.67	0.20	0.80	-	-	0.00	-	0.78		
33	-	-	-	0.00	-	-	-	0.00	1.00	1.50	0.67	1.00	0.00	0.00	0.00	0.58		
32	-	-	-	-	-	-	1.00	0.29	1.00	0.83	0.67	0.00	0.00	2.00	0.00	0.61		
31	-	-	-	-	1.00	-	1.00	1.67	0.50	0.50	1.50	0.00	0.00	0.50	0.00	0.78		
30	-	-	-	-	-	-	0.00	0.00	1.00	0.83	0.00	0.00	0.00	0.00	1.00	0.41		
29	-	-	-	-	-	0.00	0.43	1.00	0.20	0.43	0.00	0.67	0.33	2.00	0.33	0.50		
28	-	-	-	-	-	0.00	1.25	0.63	0.30	1.00	0.50	0.75	0.00	1.33	1.50	0.73		
27	-	-	-	-	-	-	0.36	0.25	0.62	0.50	1.50	1.25	0.25	1.00	0.75	0.65		
26	-	-	-	-	-	0.00	0.29	1.17	0.86	1.00	1.00	1.00	0.00	1.00	1.00	0.76		
25	-	-	-	-	-	0.00	0.43	0.50	0.86	0.25	0.40	0.00	1.00	2.00	1.50	0.56		
24	-	-	-	-	-	-	0.00	1.00	1.50	0.50	0.25	0.33	0.40	0.33	0.00	0.56		
23	-	-	-	-	-	-	1.00	1.14	0.33	1.00	0.50	1.50	1.00	1.50	0.33	0.81		
22	-	-	-	-	-	0.60	0.79	0.55	0.27	0.70	0.50	0.60	1.43	1.00	0.50	0.68		
21	-	-	-	-	-	0.71	1.29	0.89	0.42	0.33	0.80	0.25	1.00	0.00	0.83	0.85		
20	-	-	-	-	-	0.83	1.02	0.47	0.80	0.27	0.90	1.33	0.00	-	0.00	0.79		
19	-	-	-	-	-	2.75	0.85	1.03	1.17	0.83	1.33	0.50	2.00	0.00	0.33	1.02		
18	-	-	-	-	-	0.50	0.76	0.87	0.88	1.20	1.89	0.67	0.50	0.00	1.25	0.91		
17	-	-	-	-	-	1.00	0.94	1.50	1.50	0.40	1.33	1.13	0.80	2.00	0.30	1.06		
16	-	-	-	-	-	2.00	0.75	0.50	1.67	0.50	1.25	1.00	1.25	0.00	0.78	0.89		
15	-	-	-	-	-	-	1.50	0.00	1.67	2.00	1.00	0.86	1.00	1.11	0.91	1.12		
14	-	-	-	-	-	0.00	0.00	1.50	2.00	1.00	2.00	0.00	3.00	2.00	1.60	1.48		
13	-	-	-	-	-	0.00	0.00	-	1.75	-	-	-	-	-	1.00	1.13		
12	-	-	-	-	-	-	1.50	1.00	2.00	0.00	0.00	4.00	1.00	0.50	-	1.33		
11	-	-	-	-	-	-	0.67	2.00	1.00	-	0.00	2.00	1.50	3.00	2.67	1.56		
10	-	-	-	-	-	-	2.00	3.00	2.00	1.67	2.00	2.00	3.00	-	1.00	2.00		
9	-	-	-	-	-	-	1.67	0.50	0.00	1.29	1.00	1.80	1.00	0.00	0.00	1.03		
8	-	-	-	-	-	-	1.00	0.80	1.67	1.33	2.00	-	-	-	1.50	1.23		
7	-	-	-	-	-	-	2.00	2.00	1.25	0.00	2.40	1.00	-	0.00	2.00	1.52		
6	-	-	-	-	-	-	0.40	1.00	2.00	2.00	1.00	-	2.00	1.00	1.50	1.12		
5	-	-	-	-	-	-	1.00	1.10	1.00	0.00	1.00	1.00	0.50	3.00	1.50	1.13		
4	-	-	-	-	-	-	1.00	1.10	0.00	0.25	0.33	1.67	0.00	1.50	0.00	0.84		
3	-	-	-	-	-	-	1.75	-	2.50	1.00	0.67	1.00	0.00	0.00	1.00	1.18		
2	-	-	-	-	-	0.00	1.14	1.10	-	2.00	0.00	4.00	1.50	-	1.00	1.21		
1	-	-	0.00	-	-	-	-	-	-	-	-	-	-	-	-	0.00		
TOTAL	0.83	1.14	0.31	0.16	0.46	0.46	0.73	0.76	0.78	0.71	0.91	0.89	0.71	0.86	0.70	0.69		

Source: Licking County Auditor, Granville Exempted Village Schools

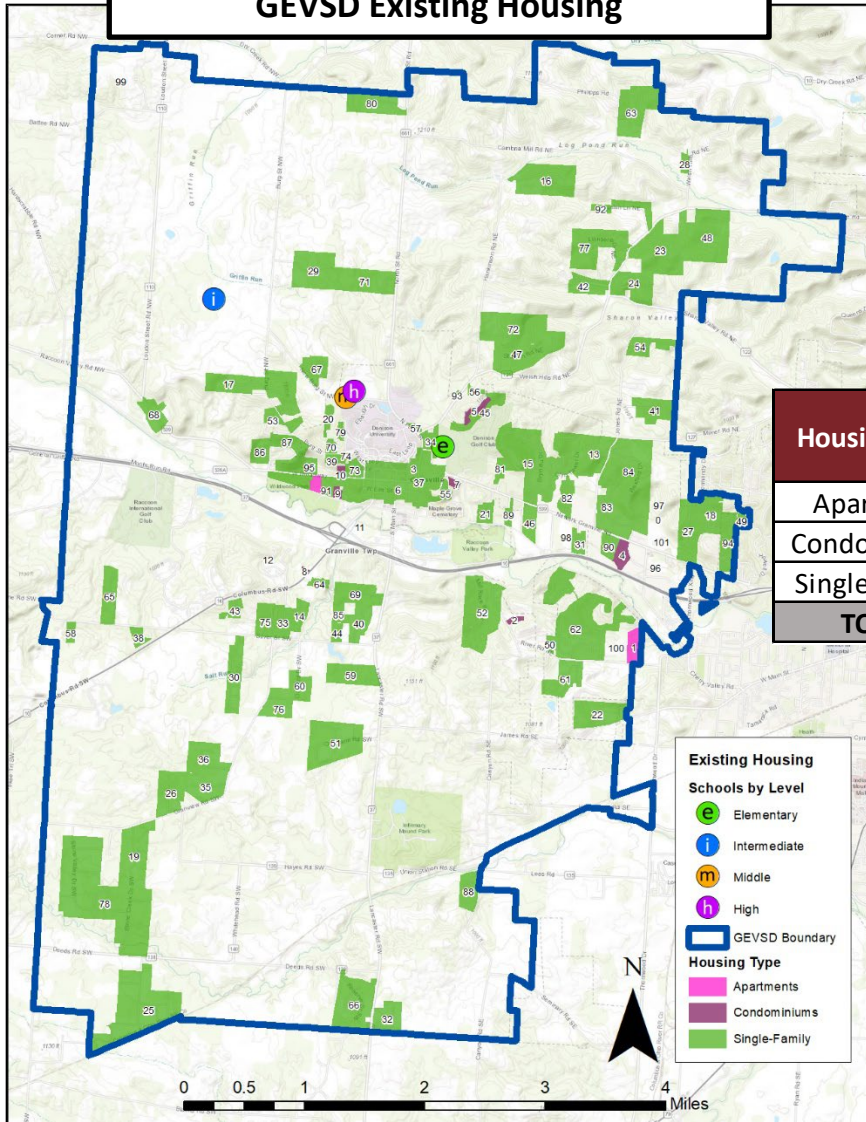


Mature Yield = 0.49 students per unit

STUDENT POTENTIAL ANALYSIS

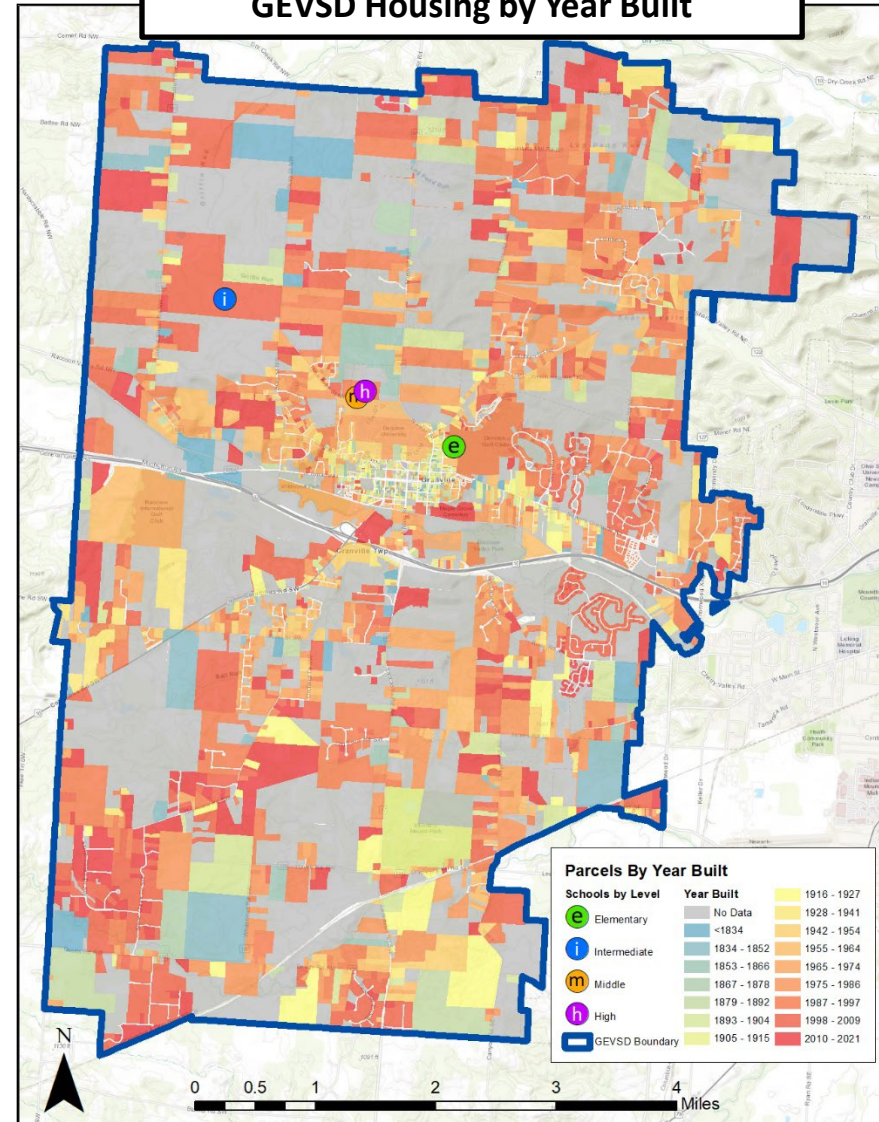
HOUSING

GEVSD Existing Housing



Housing Type	Units	Students	Yield
Apartment	198	36	0.18
Condominium	166	8	0.05
Single-Family	2,711	1,867	0.69
TOTAL	3,075	1,911	0.62

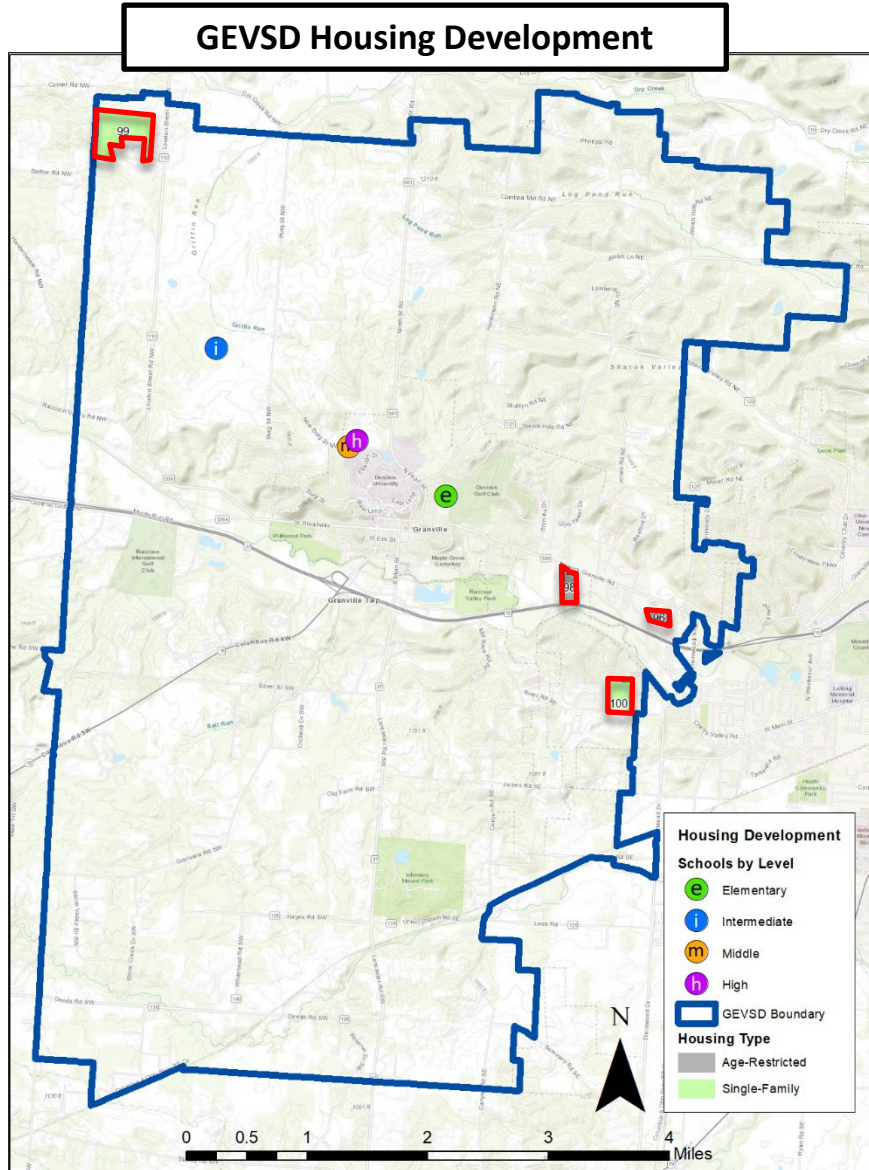
GEVSD Housing by Year Built



Year Built	Single-Family Units
<1987	1,330
1987	32
1988	18
1989	19
1990	28
1991	32
1992	27
1993	42
1994	41
1995	66
1996	37
1997	36
1998	32
1999	36
2000	93
2001	97
2002	101
2003	94
2004	96
2005	84
2006	38
2007	41
2008	27
2009	8
2010	18
2011	16
2012	15
2013	30
2014	22
2015	25
2016	25
2017	30
2018	31
2019	17
2020	24
2021	3

STUDENT POTENTIAL ANALYSIS

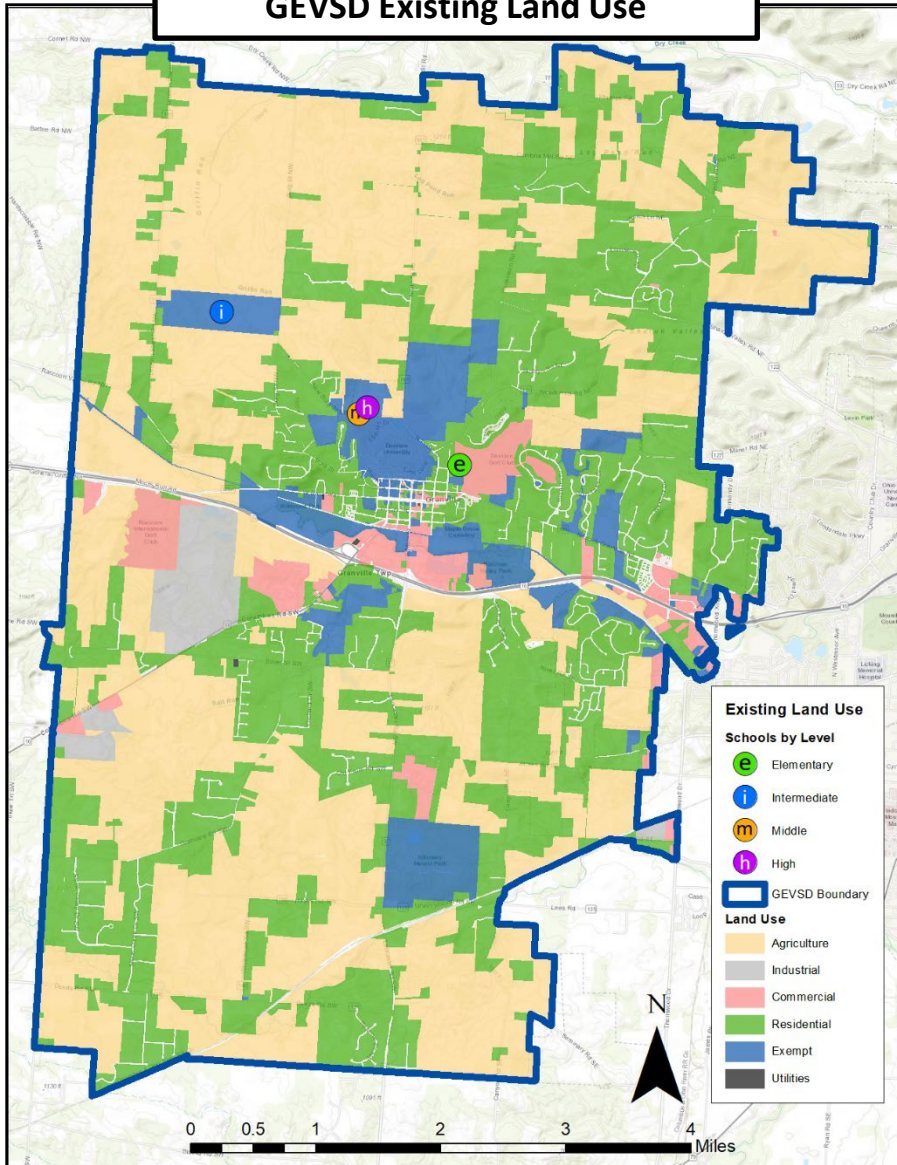
DEVELOPMENT



Development			Units at Build Out	Maximum Enrollment	Mature Enrollment
Map ID	Name	Housing Type			
99	Mockingbird Hill	Single Family	10	18	5
100	Willow Bend	Single Family	67	122	33
96	The Courtyard at Cherry Valley	Condominiums	26	Age-Restricted (55+) Communities	
98	Glenshire	Single Family	30		

STUDENT POTENTIAL ANALYSIS

GEVSD Existing Land Use



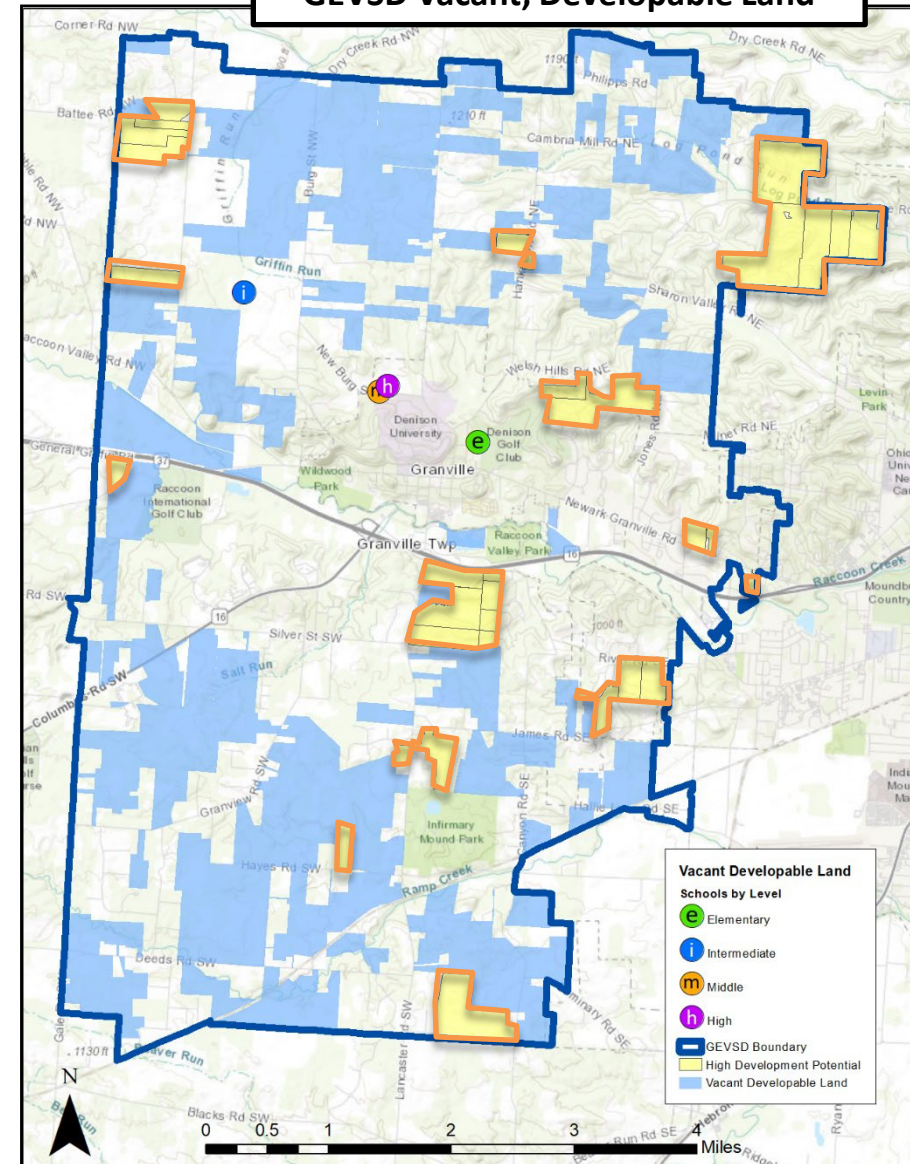
BUILD-OUT

High Development Potential:

- Being actively pursued by or already owned by developer
- Previously denied development plan
- Adjacent to existing sewer and water infrastructure
- High potential for annexation



GEVSD Vacant, Developable Land

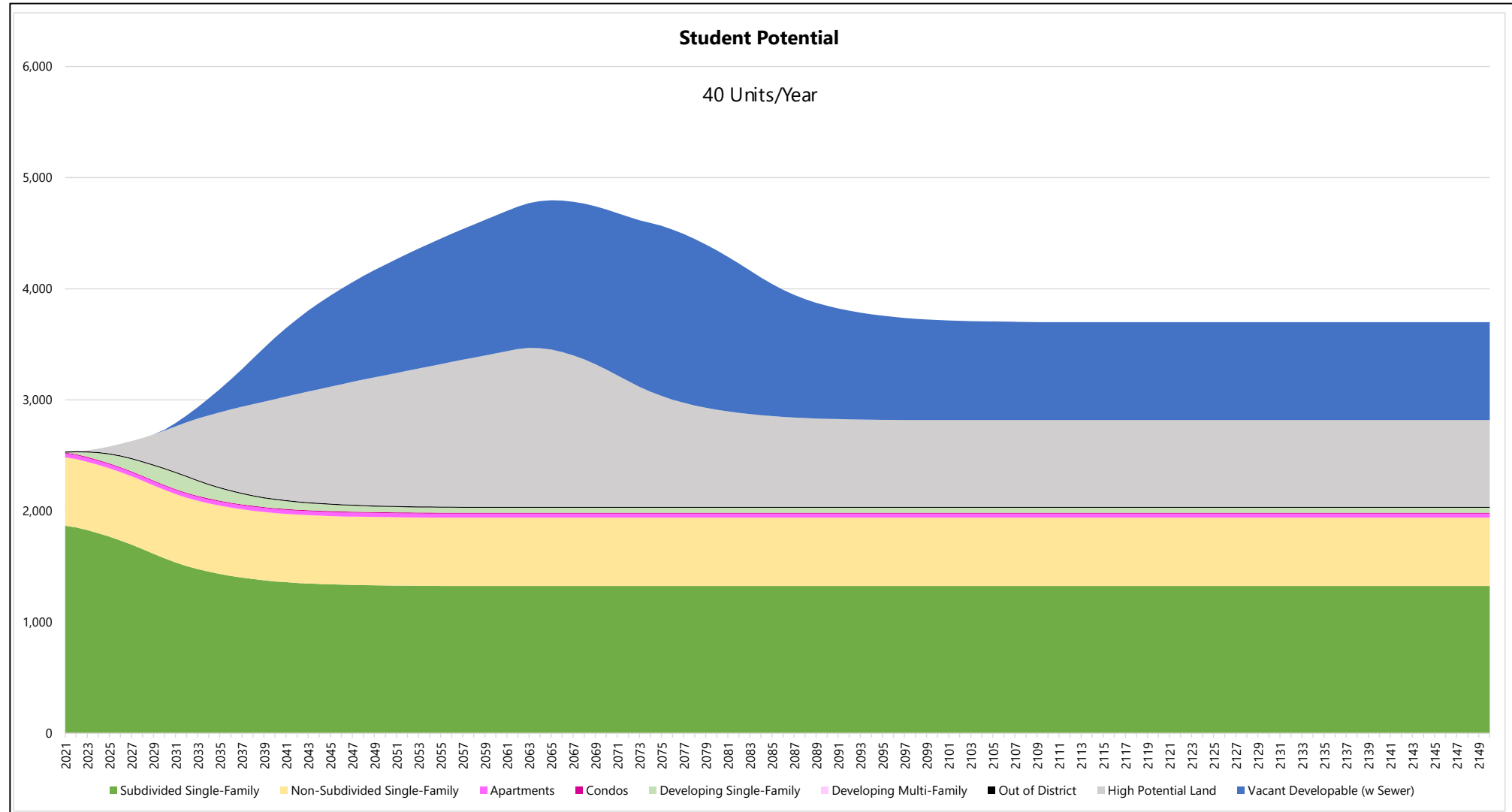


Acreage by Land Use	Licking County	Percentage
Agriculture	12,186	49.8%
Industrial	511	2.1%
Commercial	903	3.7%
Residential	9,044	36.9%
Exempt	1,840	7.5%
Utilities	4	0.0%
TOTAL	24,489	-

Source: Licking County Auditor

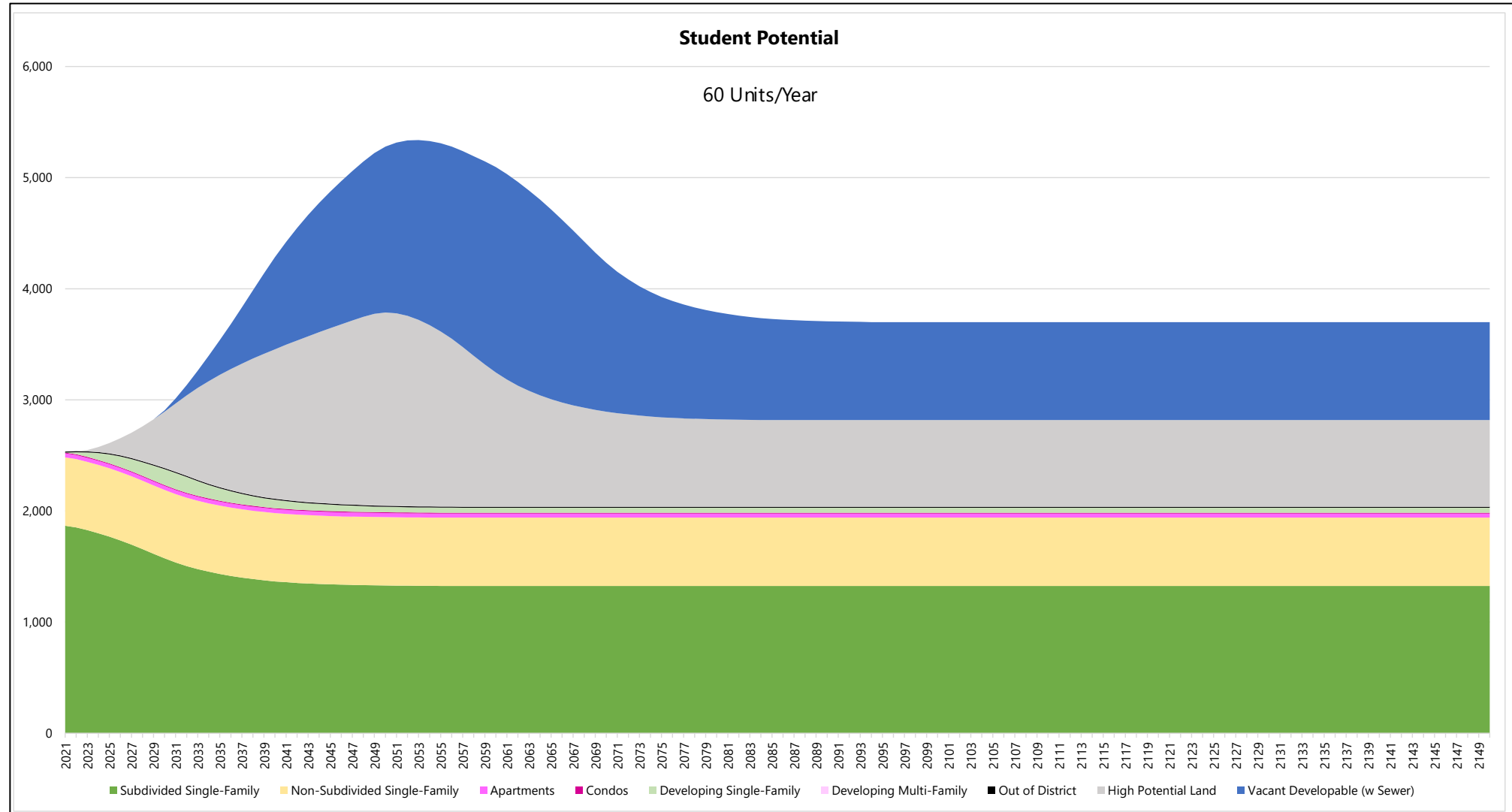
STUDENT POTENTIAL ANALYSIS

40 UNITS/YR



▶ STUDENT POTENTIAL ANALYSIS

60 UNITS/YR



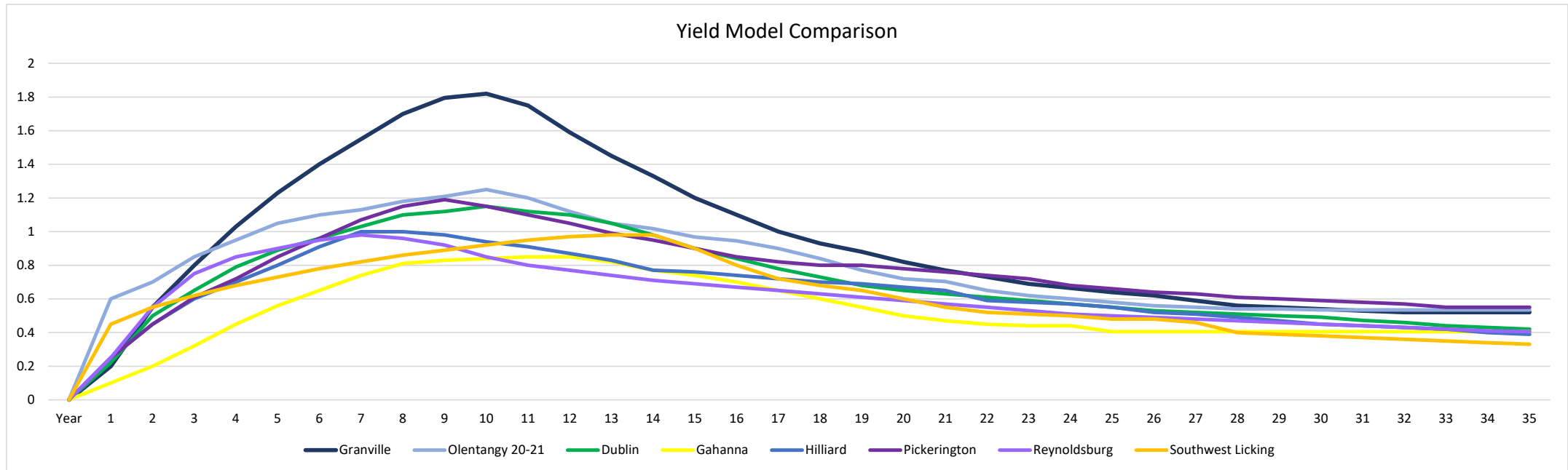
A photograph of a classroom. A female teacher in a white shirt stands at the front near a chalkboard. Several students in the foreground have their hands raised. The word "CONCLUSION" is overlaid in the center in white serif font. The image has a light blue overlay and a white border.

CONCLUSION

► CONCLUSION

YIELD COMPARISON

School District	Apartments	Condominiums	Mobile Home Parks	Townhome/Duplex	Single-Family
	Yield	Yield	Yield	Yield	Yield
Granville	0.18	0.05	-	-	0.69
Dublin	0.24	0.11	-	0.14	0.48
Gahanna	0.22	0.20	-	-	0.46
Hilliard	0.26	0.24	0.55	-	0.52
Olentangy	0.18	0.17	0.43	0.33	0.81
Pickerington	0.38	0.13	-	-	0.62
Reynoldsburg	0.26	0.19	0.45	0.45	0.47
Southwest Licking	0.29	0.07	0.28	0.61	0.52



► CONCLUSION

UTILIZATIONS

Utilization	Program Capacity	21-22	Enrollment Projections: Cohort Survival Method									
			22-23	23-24	24-25	25-26	26-27	27-28	28-29	29-30	30-31	31-32
Granville Elementary	802	89%	90%	88%	90%	85%	86%	86%	85%	86%	86%	86%
Granville Intermediate	610	100%	97%	103%	102%	110%	107%	108%	102%	103%	103%	102%
Granville Middle	544	79%	81%	81%	79%	81%	84%	85%	90%	90%	82%	85%
Granville High	972	81%	84%	84%	89%	91%	91%	92%	93%	95%	99%	99%
TOTAL	2,928	87%	88%	89%	90%	91%	92%	92%	92%	93%	93%	94%

Utilization	Program Capacity	Student Potential Analysis: Student Yields													
		36-37	41-42	46-47	51-52	56-57	61-62	66-67	71-72	76-77	81-82	86-87	91-92	96-97	101-102
Granville Elementary	802	122%	140%	153%	164%	172%	180%	184%	180%	174%	165%	153%	147%	144%	142%
Granville Intermediate	610	120%	138%	151%	161%	170%	178%	181%	177%	171%	162%	151%	145%	142%	141%
Granville Middle	544	90%	103%	113%	121%	127%	133%	136%	132%	128%	121%	113%	108%	106%	105%
Granville High	972	101%	115%	127%	135%	142%	149%	152%	148%	143%	136%	126%	121%	119%	118%
TOTAL	2,928	109%	125%	137%	146%	154%	161%	164%	160%	155%	146%	136%	131%	128%	127%

► CONCLUSION

SEAT DEFICIT

Seat Deficit	Program Capacity	21-22	Enrollment Projections: Cohort Survival Method										
			22-23	23-24	24-25	25-26	26-27	27-28	28-29	29-30	30-31	31-32	
Granville Elementary	802	88	81	93	80	119	112	112	118	112	112	112	112
Granville Intermediate	610	1	17	-17	-13	-60	-40	-49	-15	-17	-18	-11	
Granville Middle	544	116	106	106	114	104	86	82	56	57	99	82	
Granville High	972	188	157	152	108	91	88	77	66	51	8	5	
TOTAL	2,928	393	361	334	289	254	246	222	225	203	201	188	

Seat Deficit	Program Capacity	Student Potential Analysis: Student Yields													
		36-37	41-42	46-47	51-52	56-57	61-62	66-67	71-72	76-77	81-82	86-87	91-92	96-97	101-102
Granville Elementary	802	-178	-320	-429	-511	-581	-644	-673	-638	-593	-517	-426	-374	-351	-341
Granville Intermediate	610	-125	-232	-313	-375	-427	-475	-496	-470	-436	-380	-311	-272	-255	-247
Granville Middle	544	54	-17	-71	-112	-148	-179	-193	-176	-153	-116	-70	-44	-32	-27
Granville High	972	-8	-150	-259	-341	-411	-474	-503	-468	-423	-347	-256	-204	-181	-171
TOTAL	2,928	-256	-719	-1,072	-1,339	-1,567	-1,772	-1,865	-1,753	-1,604	-1,360	-1,063	-895	-818	-786

2026-27

2031-32

2036-37

2041-42

2046-47

2051-52

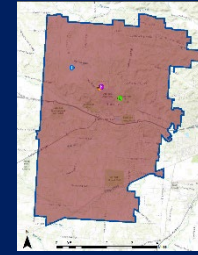
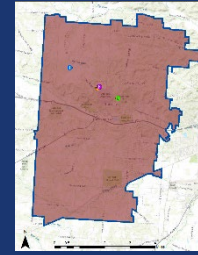
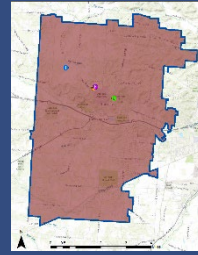
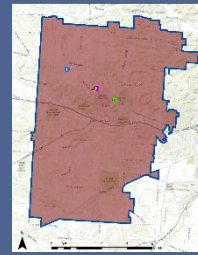
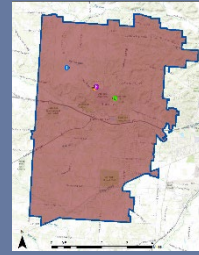
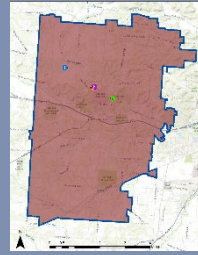
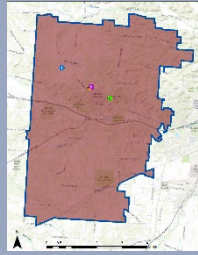
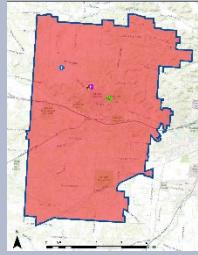
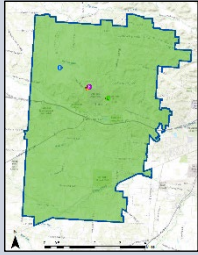
2056-57

2061-62

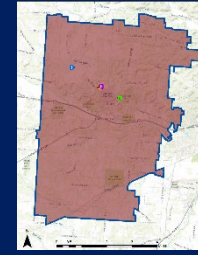
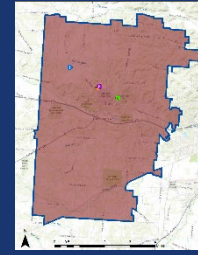
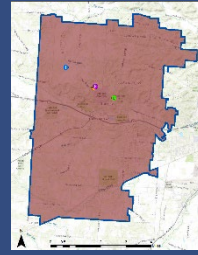
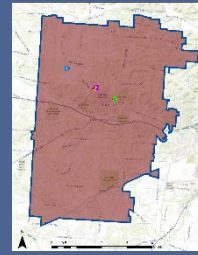
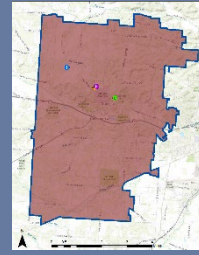
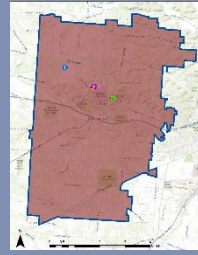
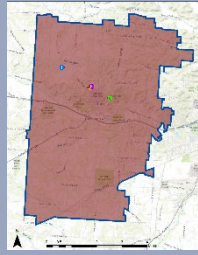
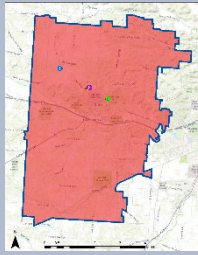
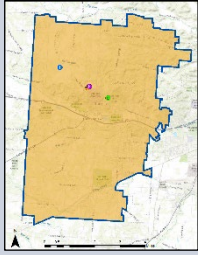
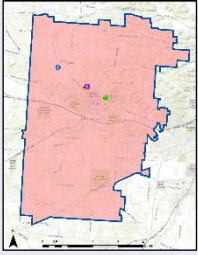
2066-67

2071-72

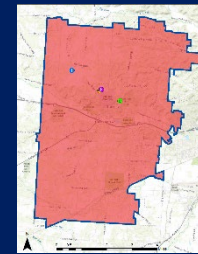
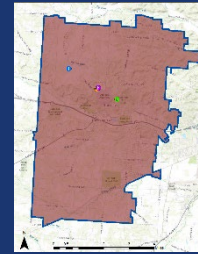
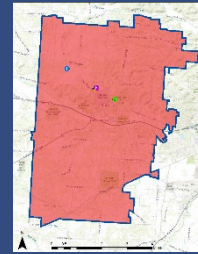
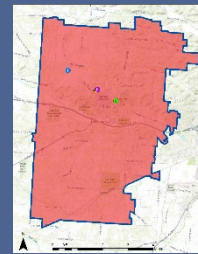
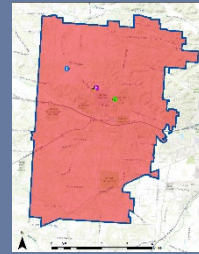
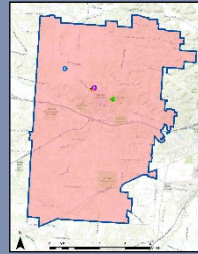
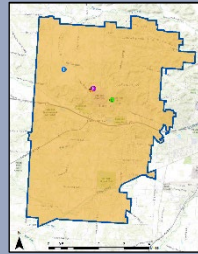
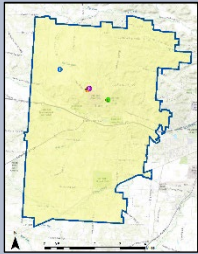
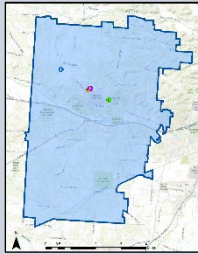
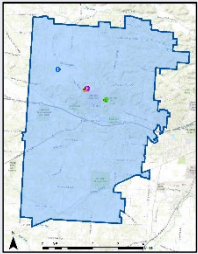
ELEMENTARY



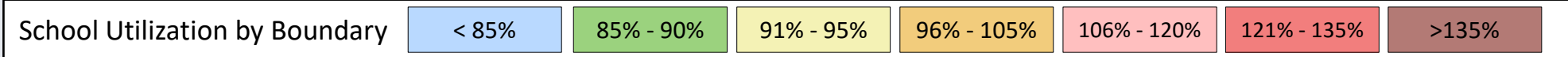
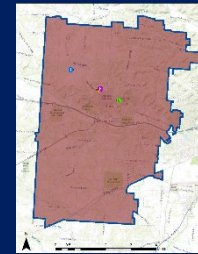
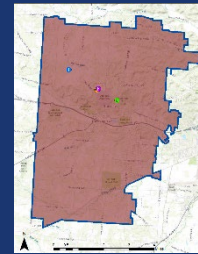
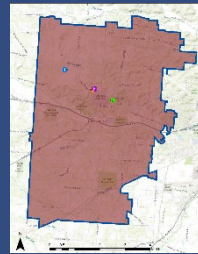
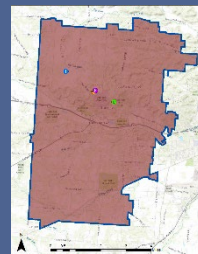
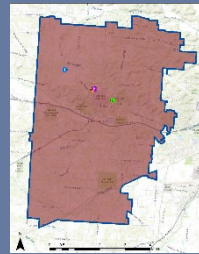
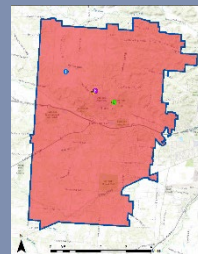
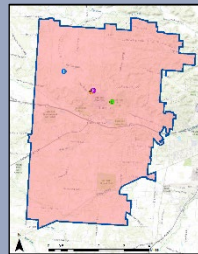
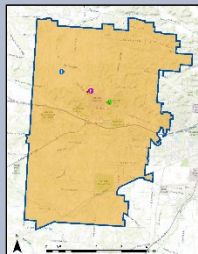
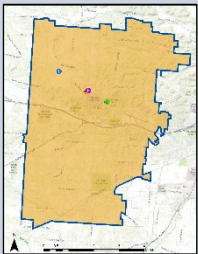
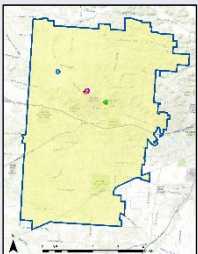
INTERMEDIATE



MIDDLE



HIGH SCHOOL





COOPERATIVE STRATEGIES

COMPLETE FINANCIAL & DEMOGRAPHIC PLANNING FOR EDUCATION

THANK YOU
WE APPRECIATE YOUR TIME